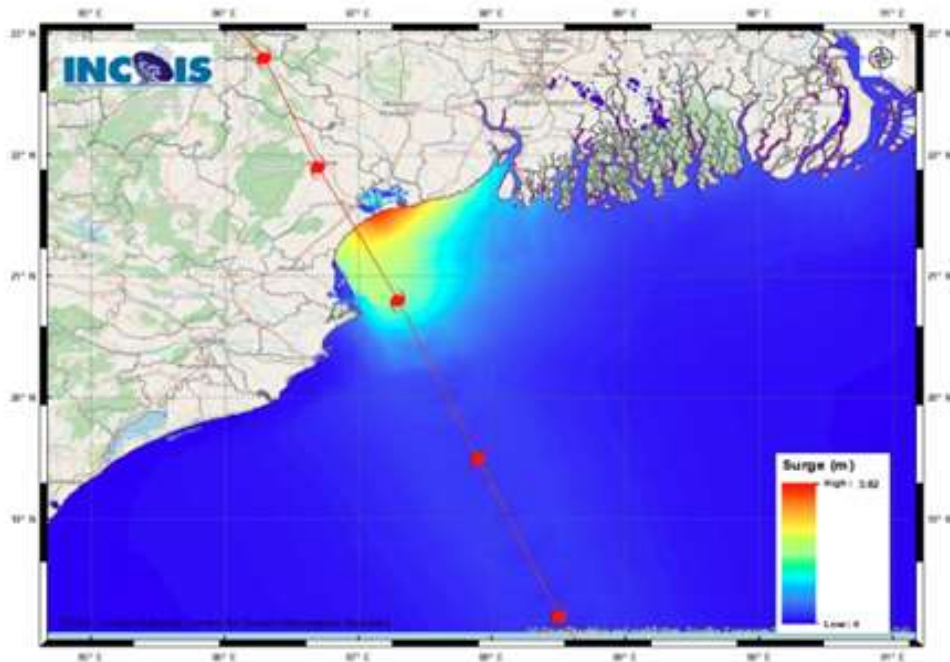


STORM SURGE GUIDANCE BASED ON 0600 UTC OF 25th MAY

Tidal waves of height 2-4 meters above astronomical tide are likely to inundate low lying low laying areas of Balasore, Bhadrak and about 2 meters above astronomical tide are likely to inundate low lying areas of Medinipur, South 24 Parganas, Kendrapara & Jagatsinghpur Districts around the time of landfall.

Storm Surge Forecast around the time of Landfall:



STORM SURGE HEIGHT INFORMATION:

* The below listed surge heights are over and above astronomical tide.

MANDAL/TALUK	DISTRICT	STATE / UNION TERRITORY	NEAREST PLACE OF HABITATION	STORM SURGE (m)	EXPECTED INUNDATION EXTENT (km)
Baleshwar	Baleshwar	Odisha	Kumbhargari	2.1-3.8	Upto 2.33
Basirhat	North 24 Parganas	West Bengal	Amlamethi	0.5-0.9	Upto 0.37
Bhadrak	Bhadrak	Odisha	Mobanpur	0.9-2.1	Upto 7.02
Diamond Harbour	South 24 Parganas	West Bengal	Pashchim Bhabanipur	0.5-1.1	Upto 0.78
Kanthi	Parba Medinipur	West Bengal	Safar Chata	0.5-2.9	Upto 1.50
Kendraparha	Kendrapara	Odisha	Tikayat Nagar	0.5-1.5	Upto 2.64
Tamluk	Parba Medinipur	West Bengal	Jamitta	0.5-1.3	Upto 0.42
Uluberiya	Haora	West Bengal	Orphuli	0.5-0.8	Upto 0.44